



BIZ CORPORATES

STOCK SERVICE



feel the
difference

contents

- 4** ● **SETTING THE IMAGE**
The professional look in comfort wool stretch suiting fabric
- 8** ●● **SETTING THE STANDARD**
Redefined comfort and style in cool stretch suiting fabric
- 12** ●● **BEST IN HOTELS & HOSPITALITY**
A selection of classic garments with a modern spirit in functional cool stretch suiting fabric
- 16** ●● **FUNKY BAR RANGE**
Smart casual styling in performance cool stretch suiting fabric
- 18** ●● **CASINOS & CLUBS**
Classic suiting options in comfortable cool stretch suiting fabric
- 20** ●● **HEALTHCARE & MEDICAL**
A range designed for high demand work environments in functional cool stretch suiting fabric
- 24** **STANDARD FINISHED LENGTH**
A look at the finished lengths of all bottom garments
- 25** **COMFORT SMART FABRICS**
New technology that meets workplace demands on work garments
- 26** **TECHNICAL INFORMATION**
- 32** **RANGE FEATURES**
- 33** **CARE STANDARDS**
- 34** **SIZE GUIDE**
- 35** **STYLE AVAILABILITY, STOCK & RETURNS**

- COMFORT WOOL STRETCH SUITING
- COOL STRETCH PLAIN SUITING
- COOL STRETCH PINSTRIPE SUITING



Introducing A New Innovation In Cool Stretch Fabric

Combining the latest technical advancements with functionality and performance to create garments that are anti-bacterial, anti-fungal, anti-static, de-odorising, breathable, thermal regulating and environmentally friendly. See page 25 for more info.



- LEFT (HER) COMFORT WOOL STRETCH SUITING
T3403 ¾ SL Silky Top (Black)
14012 Hipster Fit Pant (Charcoal)
- MIDDLE (HER) COMFORT WOOL STRETCH SUITING
S29521 ¾ SL Ambassador Shirt (Blue)
24011 Relaxed Fit Lined Skirt (Charcoal)
- RIGHT (HIM) COMFORT WOOL STRETCH SUITING
S29510 L/S Ambassador Shirt (Blue)
74012 Flat Front Pant (Charcoal)



setting the image

in comfort wool stretch suiting





- FAR LEFT (HIM) COMFORT WOOL STRETCH SUITING
84011 2 Button Jacket (Black)
S29510 L/S Ambassador Shirt (Green)
74011 One Pleat Pant (Black)
- FAR LEFT (HER) COMFORT WOOL STRETCH SUITING
64012 Longerline Jacket (Black)
S29520 L/S Ambassador Shirt (Green)
14011 Relaxed Fit Pant (Black)
- ABOVE (HIM) COMFORT WOOL STRETCH SUITING
S29510 L/S Ambassador Shirt (Green)
74011 One Pleat Pant (Black)
- ABOVE (HER) COMFORT WOOL STRETCH SUITING
S29520 L/S Ambassador Shirt (Green)
24011 Relaxed Fit Lined Skirt (Black)





- FAR LEFT (HER) COMFORT WOOL STRETCH SUITING
LB2630 L/S Boston Shirt (White)
24013 ¾ Length Fluted Lined Skirt (Charcoal)

- CENTRE LEFT (HER) COMFORT WOOL STRETCH SUITING
T3403 ¾ SL Silky Top (White)
24011 Relaxed Fit Lined Skirt (Navy)

- CENTRE RIGHT (HER) COMFORT WOOL STRETCH SUITING
S29521 ¾ SL Ambassador Shirt (Blue)
14012 Hipster Fit Pant (Navy)

- FAR RIGHT (HIM) COMFORT WOOL STRETCH SUITING
84011 2 Button Jacket (Navy)
S29510 L/S Ambassador Shirt (Silver Grey)
74011 One Pleat Pant (Navy)

setting the standard

in cool stretch suiting





- LEFT (HIM) COOL STRETCH PLAIN SUITING
80111 2 Button Jacket (Navy)
SH260 L/S Boston Shirt (Pale Blue)
70111 One Pleat Pant (Navy)
- LEFT (HER) COOL STRETCH PLAIN SUITING
60111 Short – Mid Length Jacket (Navy)
LB2630 L/S Boston Shirt (Pale Blue)
20113 ¾ Length Fluted Lined Skirt (Navy)
- ABOVE (HER) COOL STRETCH PLAIN SUITING
60112 Longerline Jacket (Charcoal)
LB2630 L/S Boston Shirt (Pink)
20112 Bandless Lined Skirt (Charcoal)
- ABOVE (HIM) COOL STRETCH PINSTRIPE SUITING
80211 2 Button Jacket (Charcoal Pinstripe)
SH260 L/S Boston Shirt (Pink)
70212 Plain Front Pant (Charcoal Pinstripe)





- FAR LEFT (HER) COOL STRETCH PINSTRIPE SUITING
LB2630 L/S Boston Shirt (White)
20211 Relaxed Fit Lined Skirt (Charcoal Pinstripe)
- CENTRE LEFT (HIM) COOL STRETCH PLAIN SUITING
SH260 L/S Boston Shirt (White)
70111 One Pleat Pant (Black)
- CENTRE RIGHT (HER) COOL STRETCH PINSTRIPE SUITING
T3403 ¾ SL Silky Top (White)
20211 Relaxed Fit Lined Skirt (Black Pinstripe)
- FAR RIGHT (HER) COOL STRETCH PINSTRIPE SUITING
60211 Short – Mid Length Jacket (Black Pinstripe)
LB2630 L/S Boston Shirt (White)
10211 Relaxed Fit Pant (Black Pinstripe)



A woman with blonde hair styled in a braid, wearing a dark blue pinstriped suit jacket over a light blue collared shirt. She is standing in a modern building with large white columns. The background shows a bright blue sky with some clouds and greenery. The text is overlaid on the bottom left of the image.

best in
hotels &
hospitality
in cool stretch suiting



- LEFT (HER) COOL STRETCH PINSTRIPE SUITING
60211 Short – Mid Length Jacket (Navy Pinstripe)
S29520 L/S Ambassador Shirt (Blue)
10211 Relaxed Fit Pant (Navy Pinstripe)
- RIGHT (HIM) COOL STRETCH PINSTRIPE SUITING
80211 2 Button Jacket (Navy Pinstripe)
S29510 L/S Ambassador Shirt (Blue)
70211 One Pleat Pant (Navy Pinstripe)





- FAR LEFT (HER) COOL STRETCH PINSTRIPE SUITING
60211 Short – Mid Length Jacket (Charcoal Pinstripe)
LB2630 L/S Boston Shirt (Pale Blue)
10211 Relaxed Fit Pant (Charcoal Pinstripe)
- CENTRE LEFT (HIM) COOL STRETCH PINSTRIPE SUITING
80211 2 Button Jacket (Black Pinstripe)
SH260 L/S Boston Shirt (Blue)
70211 One Pleat Pant (Black Pinstripe)

- CENTRE RIGHT (HER) COOL STRETCH PLAIN SUITING
LB3604 ¾ SL Contrast Oasis Shirt (Black/Charcoal)
10113 Easy Fit Waist Pant (Black)
- FAR RIGHT (HIM) COOL STRETCH PLAIN SUITING
SH3605 S/S Contrast Oasis Shirt (Black/Charcoal)
70112 Plain Front Pant (Charcoal)





funky bar range

in cool stretch suiting

- FAR LEFT (HER) COOL STRETCH PLAIN SUITING
S29620 Brooklyn ¾ Roll-up SL Stretch Shirt (Black)
10112 Hipster Fit Pant (Black)
- FAR LEFT (HIM) COOL STRETCH PLAIN SUITING
S29610 Brooklyn L/S Roll-up SL Stretch Shirt (Black)
70112 Plain Front Pant (Black)

- BELOW (HER) COOL STRETCH PLAIN SUITING
S29620 Brooklyn ¾ Roll-up SL Stretch Shirt (Khaki)
10114 Relaxed Fit Bootleg Pant (Charcoal)
- BELOW (HIM) COOL STRETCH PLAIN SUITING
SH270 L/S New Yorker Shirt (Black/White/Grey/Stone)
70111 One Pleat Pant (Charcoal)



casinos
& clubs
in cool stretch suiting





- FAR LEFT (HER) COOL STRETCH PLAIN SUITING
60112 Longerline Jacket (Black)
LB2630 L/S Boston Shirt (White)
20111 Relaxed Fit Lined Skirt (Black)

- FAR LEFT (HIM) COOL STRETCH PINSTRIPE SUITING
80211 2 Button Jacket (Black Pinstripe)
SH260 L/S Boston Shirt (White)
70211 One Pleat Pant (Black Pinstripe)

- CENTRE LEFT (HER) COOL STRETCH PLAIN SUITING
LB2725 ¾ SL New Yorker Shirt (Black/White/Grey/Stone)
10112 Hipster Fit Pant (Charcoal)

- ABOVE (HER) COOL STRETCH PLAIN SUITING
LB2525 ¾ Stretch Continental Shirt (White)
10111 Relaxed Fit Pant (Black)

- ABOVE (HIM) COOL STRETCH PLAIN SUITING
SH250 L/S Stretch Continental Shirt (Black)
70111 One Pleat Pant (Charcoal)



healthcare & medical in cool stretch suiting



- FAR LEFT (HER) COOL STRETCH PINSTRIPE SUITING
60211 Short – Mid Length Jacket (Navy Pinstripe)
LB2630 L/S Boston Shirt (White)
20211 Relaxed Fit Skirt (Navy Pinstripe)

- CENTRE LEFT (HER) COOL STRETCH PLAIN SUITING
60111 Short – Mid Length Jacket (Navy)
LB2625 ¾ SL Boston Shirt (White)
10114 Relaxed Fit Bootleg Pant (Navy)

- BELOW LEFT (HER) COOL STRETCH PLAIN SUITING
LB3601 S/S Plain Oasis Shirt (Mid Blue)
10113 Easy Fit Waist Pant (Charcoal)

- BELOW RIGHT (HER) COOL STRETCH PLAIN SUITING
60111 Short – Mid Length Jacket (Charcoal)
S29422 S/S Printed Oasis Shirt (Grey)
10111 Relaxed Fit Pant (Charcoal)





- ABOVE LEFT (HER) COOL STRETCH PLAIN SUITING
S29422 S/S Printed Oasis Shirt (Red)
20111 Relaxed Fit Lined Skirt (Navy)

- CENTRE (HIM) COOL STRETCH PLAIN SUITING
SH3603 S/S Oasis Shirt (Mid Blue)
70112 Plain Front Pant (Navy)

- RIGHT (HER) COOL STRETCH PLAIN SUITING
S29422 S/S Printed Oasis Shirt (Mid Blue)
10113 Easy Fit Waist Pant (Navy)



- **BELOW LEFT (HER)** COOL STRETCH PLAIN SUITING
S29422 S/S Printed Oasis Shirt (Grey)
10112 Hipster Fit Pant (Navy)
- **BELOW RIGHT (HER)** COOL STRETCH PLAIN SUITING
S29422 S/S Printed Oasis Shirt (White)
20113 ¾ Length Fluted Lined Skirt (Charcoal)



standard finished length

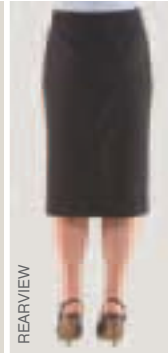
LADIES



Bandless Lined Skirt
Style: 20112



Relaxed Fit Lined Skirt
Style: 24011, 20211, 20111



Ladies 3/4 Length Fluted Lined Skirt
Style: 24013, 20113



Easy Fit Waist Pant
Style: 10113



Relaxed Fit Pant
Style: 14011, 10211, 10111



Hipster Fit Pant
Style: 14012, 10112



Relaxed Fit Bootleg Pant
Style: 10114

MENS



One Pleat Pant
Style: 74011, 70211, 70111



Plain Front Pant
Style: 74012, 70212, 70112

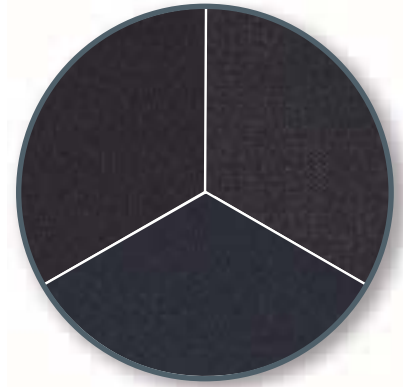
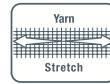


comfort smart fabrics for every work place

COMFORT WOOL STRETCH SUITING

43% Wool | 55% Polyester | 2% Elastane

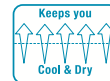
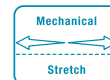
- All the quality comfort features of wool combined with the durability of polyester and elastane for added stretch comfort.
- Save money on dry cleaning by machine washing at home (simple label recommendations – pants & skirts only).
- If you like wool blend fabrics check out the catalogue sections highlighting: COMFORT WOOL STRETCH SUITING.



COOL STRETCH PLAIN SUITING

92% Polyester | 8% Bamboo Charcoal

- The workplace is an active environment with many demands placed on your garments – functionality, performance, comfort, wear and tear.
- BIZCORPORATES now introduces to the workplace the most comfortable easy care woven outerwear fabric which, through natural fibre application, presents performance features such as: quick moisture absorption, breathable, thermal regulating, bacterial resistant, removes odours and is crease resistant.
- This fabric is ideal for those active work places such as Hospitality and Healthcare.
- The COMFORT STRETCH component has been cleverly woven into the fabric to create a mechanical stretch.
- If you are looking for the ULTIMATE performance outerwear fabric check out the catalogue sections highlighting: [COOL STRETCH PLAIN SUITING](#)

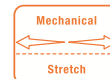


For BIZECO properties please refer to Page 35

COOL STRETCH PINSTRIPE SUITING

92% Polyester | 8% Bamboo Charcoal

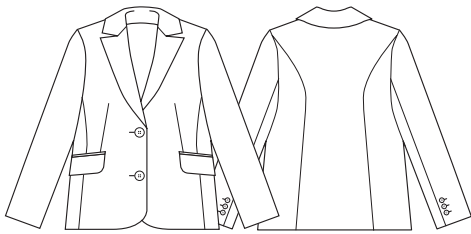
- This fabric is exactly the same as the above Plain Suiting but has a pinstripe feature.
- The concept of a similar background colour for the plain and the pinstripe creates an opportunity for any business to mix and match a coordinated theme in the work environment, providing great flexibility when planning a range for your business.
- If you are just wanting a value for money pinstripe fabric or your business wants a coordinated mix of plain and pinstripe please check out the catalogue sections highlighting: [COOL STRETCH PINSTRIPE SUITING](#).



For BIZECO properties please refer to Page 35

technical information

LADIES JACKETS



Ladies Short – Mid Length Jacket

COMFORT WOOL
STRETCH SUITING

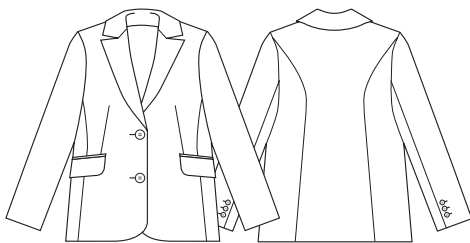
Sizes: 6 – 24
Style: 64011
Colours: Black,
Charcoal, Navy
See Page: Front page

COOL STRETCH
SUITING PLAIN

Sizes: 6 – 24
Style: 60111
Colours: Black,
Charcoal, Navy
See Page: 8, 20, 21

COOL STRETCH
SUITING PINSTRIPE

Sizes: 6 – 24
Style: 60211
Colours: Black,
Charcoal, Navy
See Page: 11, 12, 14, 20



Ladies Longerline Jacket

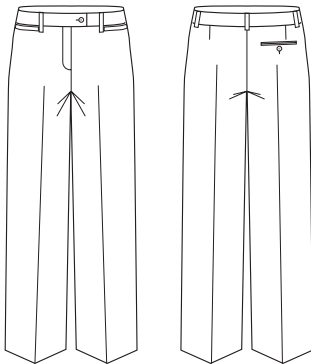
COMFORT WOOL
STRETCH SUITING

Sizes: 6 – 24
Style: 64012
Colours: Black,
Charcoal, Navy
See Page: 4

COOL STRETCH
SUITING PLAIN

Sizes: 6 – 24
Style: 60112
Colours: Black,
Charcoal, Navy
See Page: 18

LADIES PANTS



Ladies Relaxed Fit Pant

COMFORT WOOL
STRETCH SUITING

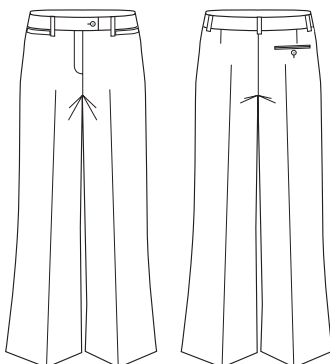
Sizes: 6 – 24
Style: 14011
Colours: Black,
Charcoal, Navy
See Page: 4

COOL STRETCH
SUITING PLAIN

Sizes: 6 – 26
Style: 10111
Colours: Black,
Charcoal, Navy
See Page: 19, 21

COOL STRETCH
SUITING PINSTRIPE

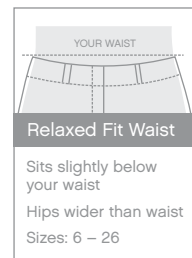
Sizes: 6 – 24
Style: 10211
Colours: Black,
Charcoal, Navy
See Page: 11, 12, 14



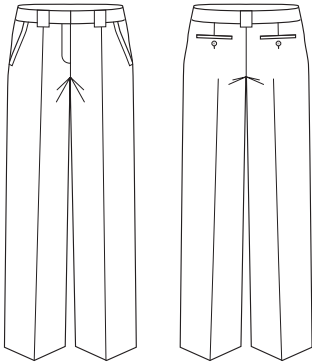
Ladies Relaxed Fit Bootleg Pant

COOL STRETCH
SUITING PLAIN

Sizes: 6 – 24
Style: 10114
Colours: Black,
Charcoal, Navy
See Page: 17, 21



LADIES PANTS



Ladies Hipster Fit Pant

COMFORT WOOL
STRETCH SUITING

Sizes: 6 – 22

Style: 14012

Colours: Black,
Charcoal, Navy

See Page: 3, 7

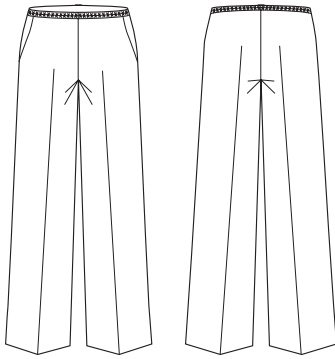
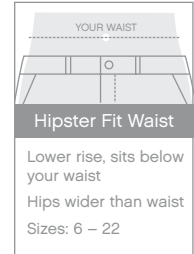
COOL STRETCH
SUITING PLAIN

Sizes: 6 – 22

Style: 10112

Colours: Black,
Charcoal, Navy

See Page: 16, 18, 23



Ladies Easy Fit Waist Pant

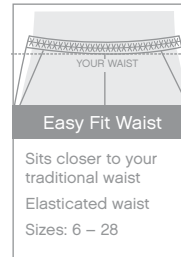
COOL STRETCH
SUITING PLAIN

Sizes: 6 – 28

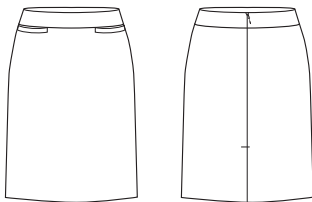
Style: 10113

Colours: Black,
Charcoal, Navy

See Page: 15, 21, 22



LADIES SKIRTS



Ladies Relaxed Fit Lined Skirt

COMFORT WOOL
STRETCH SUITING

Sizes: 6 – 24

Style: 24011

Colours: Black,
Charcoal, Navy

See Page: 3, 5, 6

COOL STRETCH
SUITING PLAIN

Sizes: 6 – 26

Style: 20111

Colours: Black,
Charcoal, Navy

See Page: 22

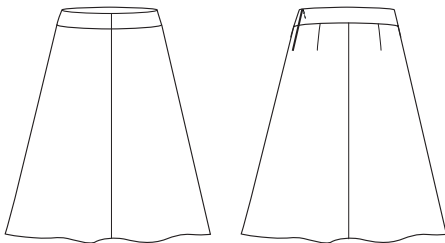
COOL STRETCH
SUITING PINSTRIPE

Sizes: 6 – 24

Style: 20211

Colours: Black,
Charcoal, Navy

See Page: 10, 11, 20



Ladies ¾ Length Fluted Lined Skirt

COMFORT WOOL
STRETCH SUITING

Sizes: 6 – 22

Style: 24013

Colours: Black,
Charcoal, Navy

See Page: 6

COOL STRETCH
SUITING PLAIN

Sizes: 6 – 24

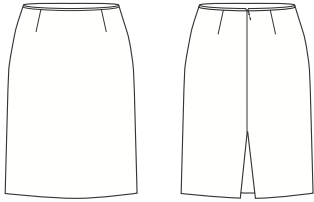
Style: 20113

Colours: Black,
Charcoal, Navy

See Page: 8, 23

technical information

LADIES SKIRTS



Ladies Bandless Lined Skirt

COOL STRETCH
SUITING PLAIN

Sizes: 6 – 22
Style: 20112
Colours: Black,
Charcoal, Navy
See Page: 9

LADIES SHIRTS

Ladies ¾ SL Ambassador Shirt



Sizes: 6 – 24
Style: S29521
Colours:
Blue
Green
Silver Grey
See Page: 3



Ladies L/S Ambassador Shirt



Sizes: 6 – 24
Style: S29520
Colours:
Blue
Green
Silver Grey
See Page: 4, 5, 12



Ladies L/S Boston Shirt



Sizes: 6 – 24
Style: LB2630
Colours:
Pink
White
Pale Blue
Silver Grey
See Page: 6, 8, 9, 10, 11, 14, 18, 20



Ladies ¾ SL Boston Shirt



Sizes: 6 – 24
Style: LB2625
Colours:
Pink
White
Pale Blue
Silver Grey
See Page: 21



Ladies ¾ SL New Yorker Shirt



Sizes: 6 – 24
Style: LB2725
Colours:
Black/White/
Stone/Grey
See Page: 18



Ladies ¾ SL Contrast Oasis Shirt



Sizes: 6 – 26
Style: LB3604
Colours:
Black/Charcoal trim
See Page: 15



LADIES SHIRTS

Ladies S/S Plain Oasis Shirt



Sizes: 6 – 26
Style: LB3601
Colours:
Mid Blue
See Page: 21



Ladies S/S Printed Oasis Shirt



Sizes: 6 – 26
Style: S29422
Colours:
White
Mid Blue
Grey
Red
See Page: 21, 22, 23



Ladies Brooklyn ¾ Roll-up SL Stretch Shirt



Sizes: 6 – 24
Style: S29620
Colours:
Khaki
Black
See Page: 16, 17



Ladies ¾ SL Stretch Continental Shirt



Sizes: 6 – 24
Style: LB2525
Colours:
White
Black
See Page: 19



Ladies ¾ SL Silky Top



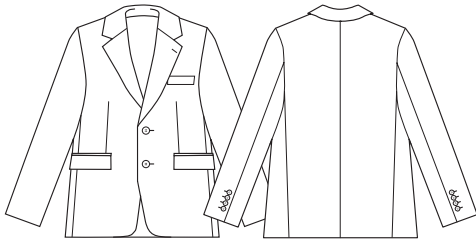
Sizes: 6 – 24
Style: T3403
Colours:
White
Black
See Page: 3, 6, 11



NOTE: ALL SHIRTS MODELLED IN THIS CATALOGUE ARE FROM BIZ COLLECTION. FOR ADDITIONAL SHIRT DETAIL AND OPTIONS PLEASE REFER TO THE BIZ COLLECTION CATALOGUE OR GO TO www.bizcollection.co.nz or www.bizcollection.com.au

technical information

MENS JACKETS



Mens 2 Button Jacket

COMFORT WOOL
STRETCH SUITING

Sizes: 92R – 132Reg
Style: 84011
Colours:
Black
Charcoal
Navy
See Page: 4, 7

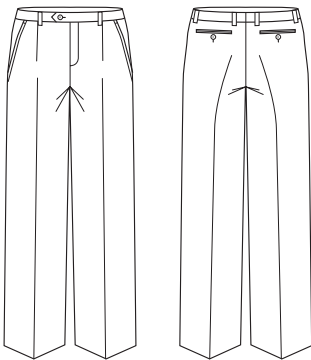
COOL STRETCH
SUITING PLAIN

Sizes: 92R – 132Reg
Style: 80111
Colours:
Black
Charcoal
Navy
See Page: 8

COOL STRETCH
SUITING PINSTRIPE

Sizes: 92R – 132Reg
Style: 80211
Colours:
Black
Charcoal
Navy
See Page: 9, 13, 14, 18

MENS PANTS



Mens One Pleat Pant

COMFORT WOOL
STRETCH SUITING

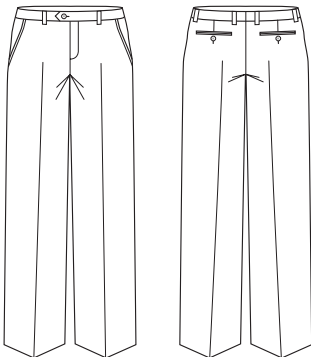
Sizes: 77R – 122Reg
Style: 74011
Colours:
Black
Charcoal
Navy
See Page: 4, 5, 7

COOL STRETCH
SUITING PLAIN

Sizes: 77R – 102 Reg
107S – 127Stout
Style: 70111
Colours:
Black
Charcoal
Navy
See Page: 8, 10, 17, 19

COOL STRETCH
SUITING PINSTRIPE

Sizes: 77R – 122Reg
Style: 70211
Colours:
Black
Charcoal
Navy
See Page: 13, 14, 18



Mens Plain Front Pant

COMFORT WOOL
STRETCH SUITING

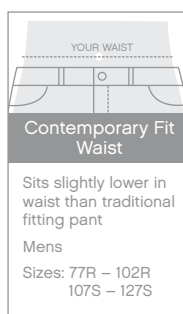
Sizes: 77R – 122Reg
Style: 74012
Colours:
Black
Charcoal
Navy
See Page: 3

COOL STRETCH
SUITING PLAIN

Sizes: 77R – 102Reg
107S – 127Stout
Style: 70112
Colours:
Black
Charcoal
Navy
See Page: 15, 16, 22

COOL STRETCH
SUITING PINSTRIPE

Sizes: 77R – 122Reg
Style: 70212
Colours:
Black
Charcoal
Navy
See Page: 9



MENS SHIRTS

Mens L/S Ambassador Shirt



Sizes: S – 5XL
 Style: S29510
 Colours: Blue
 Green
 Silver Grey
 See Page: 3, 4, 5, 7, 13



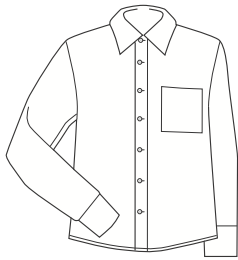
Mens L/S Boston Shirt



Sizes: S – 5XL
 Style: SH260
 Colours: White
 Pink
 Pale Blue
 Silver Grey
 See Page: 8, 9, 10, 14, 18



Mens L/S New Yorker Shirt



Sizes: S – 5XL
 Style: SH270
 Colours:
 Black/White/
 Stone/Grey
 See Page: 17



Mens S/S Contrast Oasis Shirt



Style: S – 5XL
 Style: SH3605
 Colours:
 Black/Charcoal
 See Page: 15



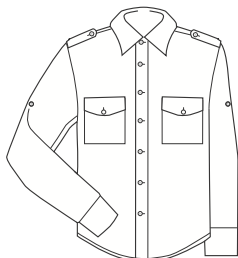
Mens S/S Plain Oasis Shirt



Sizes: S – 5XL
 Style: SH3603
 Colours:
 Mid Blue
 See Page: 22



Mens Brooklyn L/S Roll-up Stretch Shirt



Sizes: S – 5XL
 Style: S29610
 Colours: Khaki
 Black
 See Page: 16



Mens L/S Stretch Continental Shirt



Sizes: S – 5XL
 Style: SH250
 Colours: Black
 White
 See Page: 19



NOTE: ALL SHIRTS MODELLED IN THIS CATALOGUE ARE FROM BIZ COLLECTION. FOR ADDITIONAL SHIRT DETAIL AND OPTIONS PLEASE REFER TO THE BIZ COLLECTION CATALOGUE OR GO TO www.bizcollection.co.nz or www.bizcollection.com.au

range features

IN GENERAL

All fabrics have a stretch feature for the benefit of added comfort.

All lined garments are lined with a stretch lining, which has some moisture absorbing benefit, complimenting the coordinated performance outerwear fabrics.

Most garments have been enhanced with Stretch Fusing for added comfort.

LADIES PANTS

- Extra wide side seams allowing for 'fractional fitting' adjustments
- Rear waist centre seam allowance, creating additional 'fractional fitting' adjustments for waist comfort.
- Stretch waist fusing, creating additional comfort at waist.

LADIES SKIRTS

- Extra wide side seams allowing for 'fractional fitting' adjustments
- Stretch waist fusing (except Style 20112), creating additional comfort at waist.
- LHF concealed pocket for added personalized options (Style 20113).

LADIES JACKETS

- Stretch fusing has been introduced for added comfort
- Internal pocketing for added personalized options.
- Embroidery access through LHS inside seam concealed zip.

MENS PANTS

- RHF pocket with concealed pocket for added personalized options.
- Stretch waist fusing, creating additional waist comfort.
- Rear waist with extra centre seam allowance, creating additional 'fractional fitting' option for waist comfort.

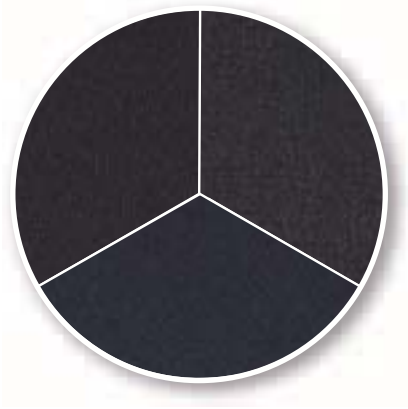
MENS JACKETS

- Stretch fusing has been introduced for added comfort
- Internal pocketing for added personalized options
- Embroidery access through LHS inside seam concealed zip.

care standards

RANGE

COMFORT WOOL STRETCH SUITING



FABRIC

55 % Polyester
43% Wool
2% Elastane

CARE INSTRUCTIONS

Pants and Skirts

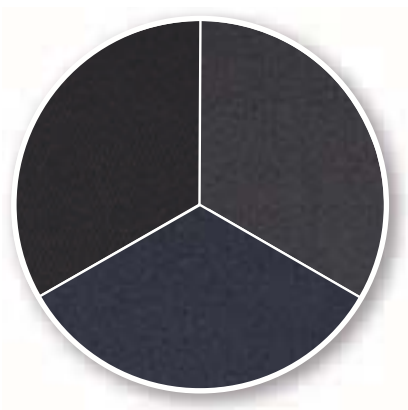
Machine wash on wool cycle or handwash using recommended wool detergent. Wash with similar colours. Rinse well. Do not bleach, soak, tumble dry. Line dry in shade. Warm iron (wool settings). Recommend dry clean 30c (P).



Jackets

Dry clean only 30c (P).

COOL STRETCH SUITING



92% Polyester
8% Bamboo Charcoal



Pants and Skirts

Warm or cold machine wash. Wash with similar colours. Do not bleach. Do not tumble dry. Line dry in shade. Warm iron. Recommend dry clean 30c (P).



Jackets

Dry clean only 30c (P).

BEST PERFORMANCE GUIDELINES FOR THE CARE OF YOUR BIZCORPORATES GARMENT

- When ironing, use a warm iron and recommended steam setting. Otherwise iron inside out or use a cover cloth. (A hot iron will shine the polyester yarn in the fabric).
- We recommend Qualified Professional Laundering for long term care of the Comfort Wool Stretch Suiting garments.
- We recommend for washing, Eco Friendly washing liquid.
- Line Dry. DO NOT TUMBLE DRY your garment.
- We recommend drying in shade. Direct sunlight will accelerate fading of garment.

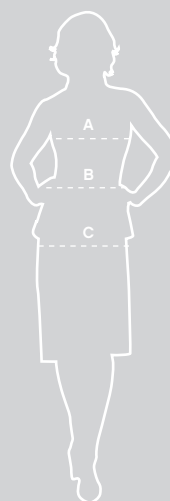
measurement size guide

The body measurement size chart below is a guide only, please choose the size closest to your own **body measurements**.

LADIES

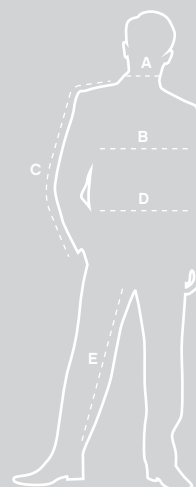
The waist specifications are the natural waist measurements, which have to be considered even though the garments will fit lower.

LADIES JACKETS, SKIRTS AND PANTS						
Size	6	8	10	12	14	16
Bust (cm)	79	84	89	94	99	104
Waist (cm)	61	66	71	76	81	86
Lower (cm)	Add approximately 10 – 13cm to waist measurement as this will vary.					
Hip (cm)	89	94	99	104	109	114
Plus Sizing	18	20	22	24	26	28
Bust (cm)	111	116	121	126	131	136
Waist (cm)	93	98	103	108	113	118
Lower (cm)	Add approximately 10 – 13cm to waist measurement as this will vary.					
Hip (cm)	121	126	131	136	141	146



- A. BUST:** Keep the tape up under arms and around shoulder blades while measuring around the fullest part of the bust. Hold one finger between body and tape.
- B. WAIST:** Hold one finger between body and tape while measuring around waist.
- C. HIPS:** Measure around fullest part of hips (about 20 – 24cm down from waist) while standing naturally.

MENS										
MENS JACKETS										
Size	92R	97R	102R	107R	112R	117R	122R	127R	132R	
Chest (cm)	92	97	102	107	112	117	122	127	132	
Waist (cm)	77	82	87	92	97	102	107	112	117	
TROUSERS – REGULAR FIT										
Size	77R	82R	87R	92R	97R	102R	107R	112R	117R	122R
Waist (cm)	77	82	87	92	97	102	107	112	117	122
In Leg (cm)	81	81	82	82	83	83	84	84	84	84
TROUSERS – STOUT FIT (Cool Stretch Plain Suiting only)										
Size	107S	112S	117S	122S	127S					
Waist (cm)	107	112	117	122	127					
In Leg (cm)	81	81	82	82	83					



- A. NECK:** Measure loosely around neck at collar level, making allowance for comfort.
- B. CHEST:** Keep the tape up under arms and around shoulder blades while measuring around the fullest part of chest.
- C. ARM:** Lay a shirt out flat and measure from centre back neck seam to top of shoulder seam, and then to end of cuff down length of sleeve.
- D. WAIST:** Hold one finger between body and tape while measuring around waist. Measure over shirt at position pants would normally be worn.
- E. INNER LEG:** Measure inside leg (from crotch to hem) of a well-fitting pair of pants.

Note: The size measurement chart is a guide only, actual sizing may vary according to the style and fit of the garment.

NOTE: FOR ALL SHIRT SIZING, PLEASE REFER TO THE BIZ COLLECTION CATALOGUE FOR DETAIL.

information



ADVANTAGES OF USING BAMBOO

- Bamboo grows rapidly and naturally without any pesticides, herbicides or fertilizers, and improves soil quality by preventing water run-off and rebuilding eroded soil;
- Bamboo grows naturally, without the need for agricultural tending and large diesel exhaust-spewing tractors to plant seeds and cultivate the soil;
- Bamboo plantations are large factories for photosynthesis which reduces greenhouse gases – bamboo plants absorb about 5 times the amount of carbon dioxide and produces about 35% more oxygen than an equivalent stand of trees;

PROPERTIES OF BAMBOO CHARCOAL FABRICS

- Fabric is soft, non-irritating and hypoallergenic because of the smooth and round structure of its fibres;
- Bamboo is naturally anti-bacterial and anti-fungal because of a unique bacteriostatic agent called “bamboo kun” which also helps bamboo resist harbouring odours. The bamboo kun stops odour-producing bacteria from growing and spreading in the cloth, allowing bamboo clothing to be more hygienic and to remain fresher smelling;
- Bamboo is highly absorbent and wicks water away from the body 3 to 4 times faster than cotton. In warm, humid and sweaty weather, bamboo clothing helps keep the wearer drier, cooler and more comfortable and doesn't stick to the skin;
- The fibre structure makes bamboo fabrics more breathable and thermal regulating than cotton, hemp, wool or synthetic fabrics;
- Fabric is naturally more wrinkle-resistant than cotton, and shrinkage during washing and drying is minimal;
- Fabrics absorb dyes faster and more thoroughly than cotton, modal and viscose, with better colour clarity, and do not need to be mercerized to improve their lustre and dye-ability.

ONGOING STYLE AVAILABILITY

The BIZCORPORATES product range endeavours to ensure catalogue styles are available on a long term basis as we understand that Corporate Range programmes generally run for a minimum of 2 – 3 years.

BIZCORPORATES also has a commitment to ensuring our range of garments evolves to reflect the changing market trends, styles and fabric technologies.

We recommend that before committing our styles to any lengthy uniform contracts, it would be wise to discuss ongoing availability with your BIZCORPORATES representative.

STOCK AVAILABILITY

Due to unforeseen circumstances we may find demand may exceed supply leaving us short of stock of some items from time to time. Whilst we will always try to ensure current stocks and back-up orders are meeting demand trends there are times when shortages may occur.

BIZCorporates Customer Service will always do their best and advise you of any shortages at the time of order and place the items on backorder to forward to you separately.

RETURNS POLICY

- All returns must be made within 14 days of receipt of goods, and must be authorised by our Customer Service Department. The customer must supply an Invoice No. and a reason for the return. All returns must be accompanied by a R.A.N (Return Authorisation No.)
- All return freight costs are to be borne by the customer. These will incur a 10% handling fee. Please note, returned goods must be in “as new” condition with appropriate labelling attached.
- Where returns are based on a Quality issue outside normal “wear and tear”, our nominated carrier is to be used. No handling fee will apply.
- Any non-stock, damaged or monogrammed goods are non-refundable.

This entire catalogue is printed on eco-friendly paper containing pulp from a controlled wood source. The manufacturing process operates under an Environmental Management System that is Certified by ISO 14001 and uses an Elemental Chlorine Free (ECF) bleaching process.



PRINTED ON ECO-FRIENDLY PAPER. MANUFACTURED WITH PULP FROM A CONTROLLED WOOD SOURCE.



www.bizcorporates.com

NO IMAGES MAY BE REPRODUCED WITHOUT THE WRITTEN PERMISSION OF THE PUBLISHER. COLOURS ARE REPRODUCED AS CLOSELY AS PRINTING ALLOWS.